



Product Catalogue

“DynaFrame is the best way to light your banner!”

conceptGLO
www.conceptGLO.com



>> About Us

conceptGLO is a team of young and energetic professionals coming from the industry dedicated to provide innovative and comprehensive advertising equipment and production services in Hong Kong.

Our portfolio includes

- ★ Textile frameless LED light box “DynaFrame”
- ★ Pop up display stand
- ★ Retail display stand
- ★ Promotion display stand,
- ★ Exhibition stand
- ★ LCD digital signage

Our products are widely used in brand retail shops, shopping malls, exhibitions, road shows, product launch events, variety performance shows...and more.



Find Us At:

HK Head Office:

conceptGLO Company

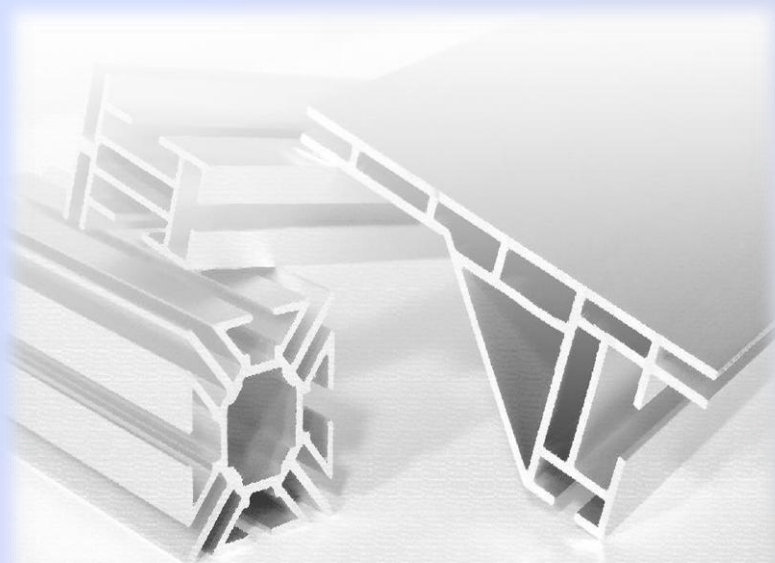
t / +852 3114 0447

f / +852 3114 0464

m / +852 9758 6097

e / pam@conceptGLO.com

w / www.conceptGLO.com



>> Features & Benefits

“DynaFrame is the best way to light your banner!”

DynaFrame is an aluminum frame with fabric banners which is exchangeable and reusable. LED lighting option available for back-illumination of banners. With the ability to be almost any length, and up to 3 m in width for a seamless sign, DynaFrame is the fabric signage revolution.

You can use DynaFrame as a room divider, decoration display, information wall, etc. DynaFrame blends into every retail environment: the eye catcher in your shop!

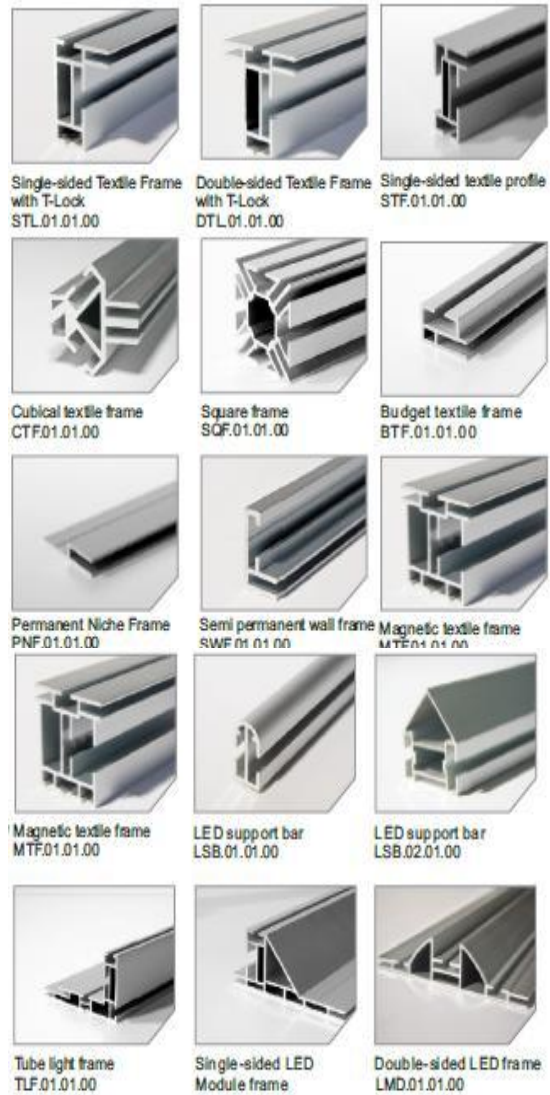
DynaFrame offers a solution for any indoor signage requirement.

DynaFrame is:

- ❖ lightweight yet strong and portable
- ❖ simple, fast & tool-free assembly
- ❖ rich and vibrant dye-sub fabric printing
- ❖ colorfast, fade resistant, crease resistant, washable and durable fabric
- ❖ versatile and has many applications
- ❖ easy to fold and store
- ❖ economical to transport
- ❖ re-usable hardware
- ❖ smart, environmentally friendly and cost effective
- ❖ a superior end result
- ❖ eye catching outdoor illuminated DynaFrame
- ❖ curved DynaFrame design looks sensational
- ❖ perfect for exhibition, events and retail environments

DynaFrame is the latest technology in signage and creates a bold, beautiful, eye catching result.

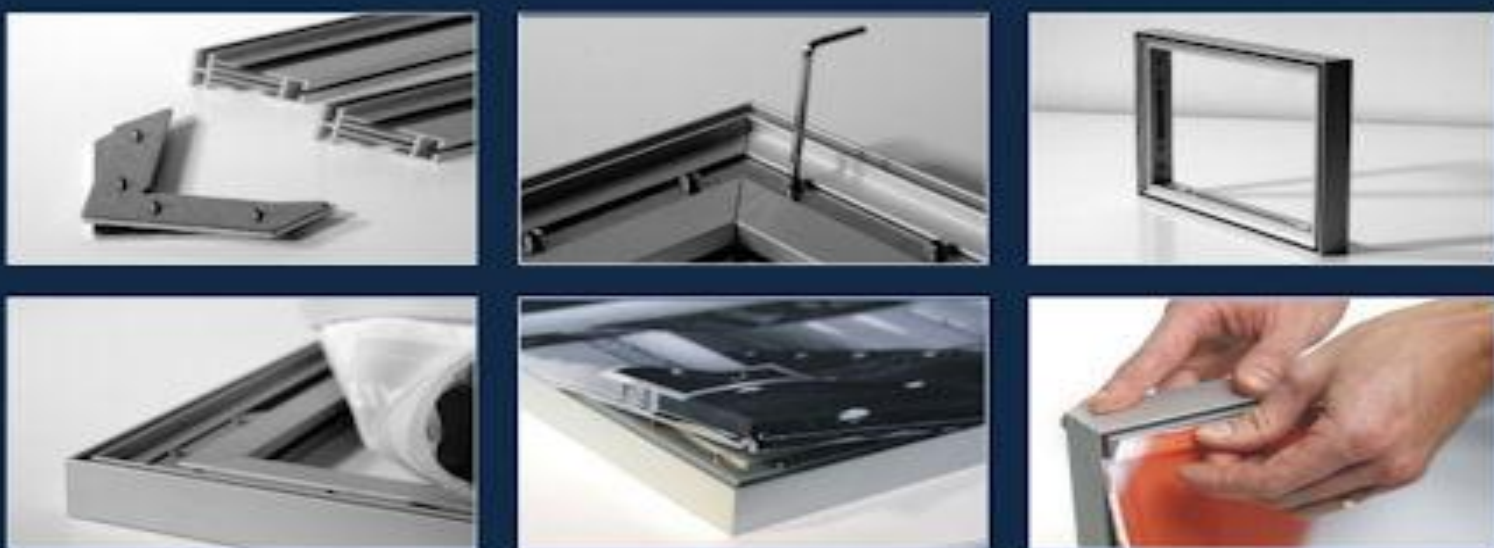




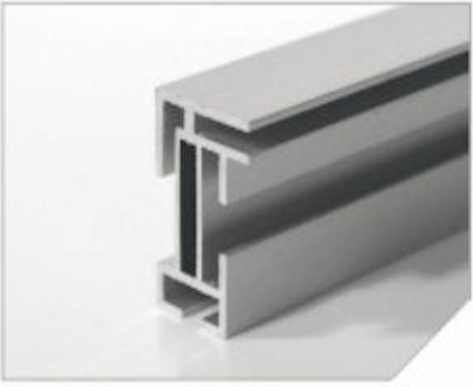
The DynaFrame System

All our products are based on the combination of ingeniously designed frames and textile prints. The prints are fitted with a silicone strip that fits exactly into the groove of the frame.

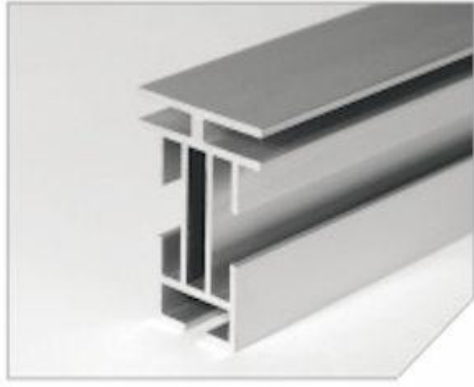
Mounting prints with silicone strips is very easy. The quality is exceptional, whatever the size of the frame. You will not be able to discover a single crease, even in displays as large as 6x3 meters, and placing a print is only a matter of minutes.



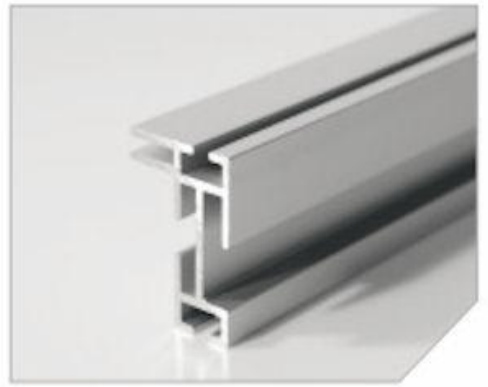
>> DynaFrame Profiles



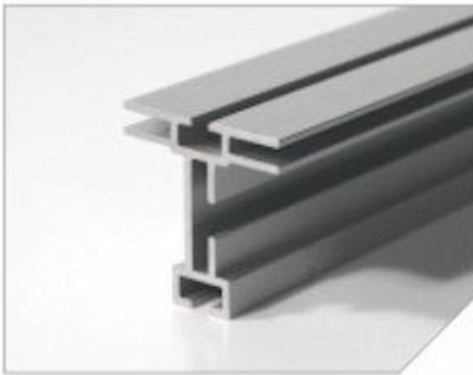
Fabric Frame | Single Sided



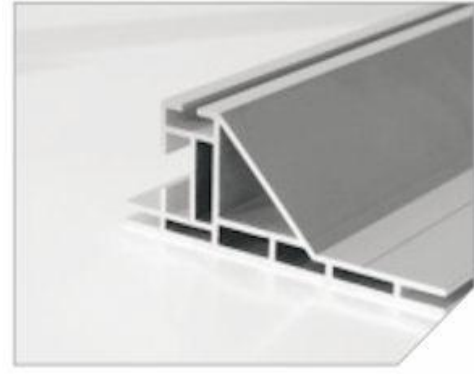
Fabric Frame | Double Sided



T-Lock Frame | Single Sided



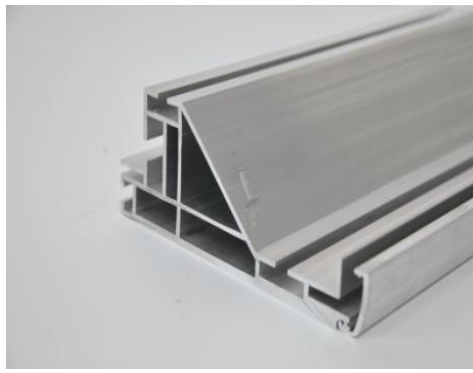
T-Lock Frame | Double Sided



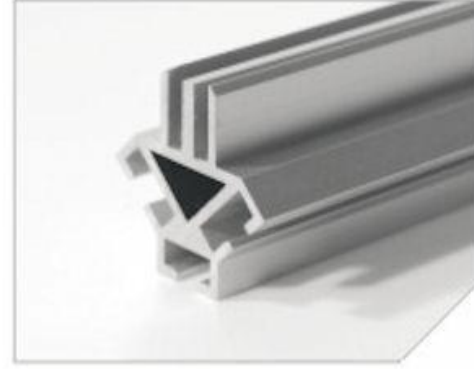
Light Box | Single Sided



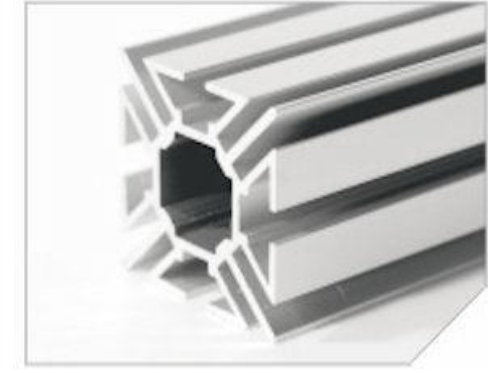
Light Box | Double Sided



Light Box | Outdoor



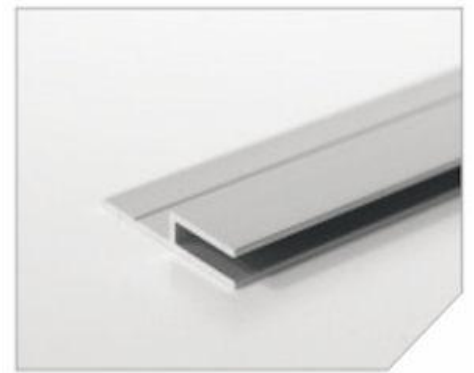
Cubical Frame



Square Frame



Permanent Wall Frame



Permanent Niche Frame

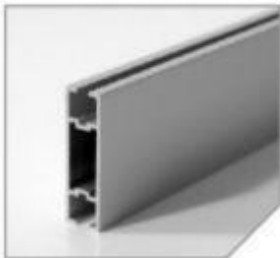


Curved Frame

>> DynaFrame Accessories



90° Connector
UNV.02.01.01



Support bar
SUP.01.01.00



Support bar connector
SUP.02.03.01



Allen frame wrench
SUP.06.04.01



Roof connector
ULF.02.07.01



180° Connecting piece LED
ULF.04.03.01



135° Connecting piece LED
ULF.04.04.01



180° Connecting piece double-sided
DTF. 04.03.00



Wall Connector single-sided
SLF. 02.06.01



Wall connector
STF.02.06.00



Base foot curved.
SLF. 02.20.00



Kite foot
UTL. 02.20.01



Base foot
STF. 02.10.00



90° corner construction. Printing inside
DTF. 04.02.00



135° corner construction. Printing outside
STF. 04.04.00



180° connector for two singlesided frames
STF.04.03.00



90° corner construction. Printing inside
STF.04.01.00



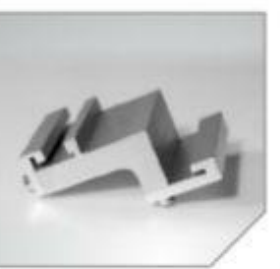
135° corner construction. Printing inside
DTF.04.04.00



90° corner construction. Printing outside
STF.04.02.00



180° Connector for
SPE. 04.07.00



90° Connector for
SPE.04.06.00



90° corner construction. Printing inside
SLF.04.05.00



180° connector for two single-sided LED frames
SLF.04.03.00



180° Connector for
SPE.04.08.00



Corner constructions 90°
Light spot connector
SQF.02.80.00

Display tex for textile frames



Data sheet Eco Display 210 FR + W

Article number: 4280-26eco

Material: 100 % PES

Weight: 210 g/m²

Specialities:

- crease resistant
- not transparent for frame systems

Applications:

- Display frame systems
- Display Pop up systems
- Display X-Kite Systems
- banners



Lighttex for backlit prints



Data sheet Led Textile

Article number: 4499-6

Material: 100 % PES

Weight: 260 g/m²

Specialities:

- not elastic
- tearproof
- special coating for light diffiusion in lightboxes
- good flatness

Applications:

- Light boxes



Textiles

For decades, Berger Textiles has been a household name in the area of fabrics and accessories. As one of Europe's largest textile manufacturers Berger focuses first and foremost on quality. Berger produces the right textiles for Dye Sub, Latex, UV and Solvent printers. The fabrics we have included in our product range are all B1 and M1 certified, which means that they have undergone a fire retardant treatment.



>> The Illumination

The new LED modules offer a number of advantages compared with the current light sources:

- ❖ Up to 40% cheaper than LED frames lit from behind
- ❖ 100% Homogeneous
- ❖ No back plate required, making the display very compact and light
- ❖ Quicker assembly time (Easy Fix locking, no further tools needed during installation)
- ❖ Up to 80% lighter than the current alternative light sources
- ❖ Very compact transport
- ❖ All sizes light boxes are possible
- ❖ More light output compared with traditional LED's
- ❖ Plug & Play; very easy to set up. You cannot go wrong thanks to the ingenious plugs



Long life
• Over 50,000 hours

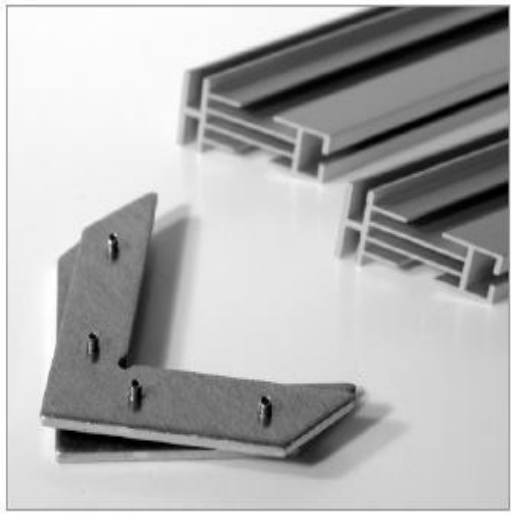
High brightness
• Approx. 720 net Lumens per module

Technical specifications:

Lifetime:	CCT Range:	Lumen:	Approvements:	Voltage:	Watt:	Packing per:
50.000 Hrs.	6300-7000K*	720 lm	CE	24VDC	Max. 15 Watt	12 pcs.

* (Cool light)

>> Easy Set Up (Frame & Fabric)



Parts



Step 1



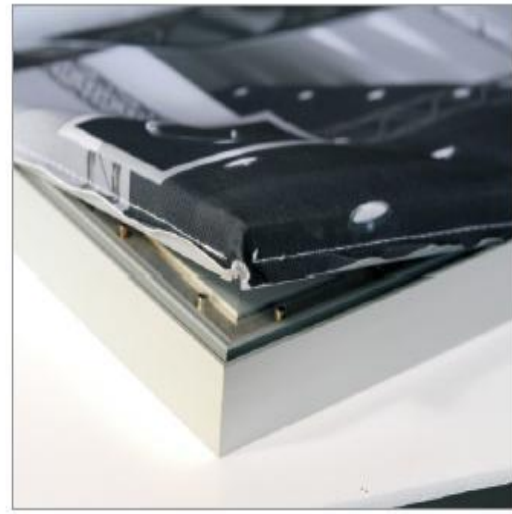
Step 2



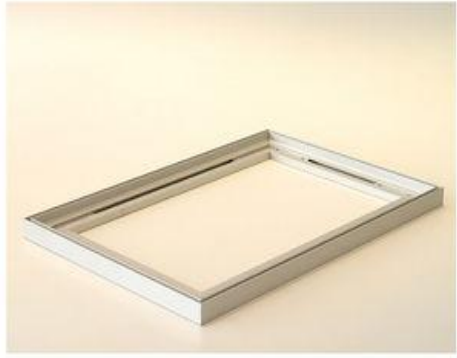
Step 3



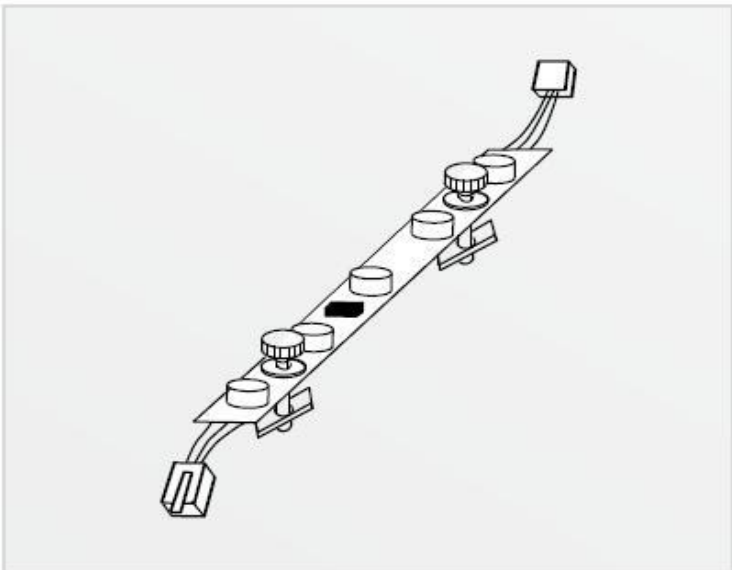
Step 4



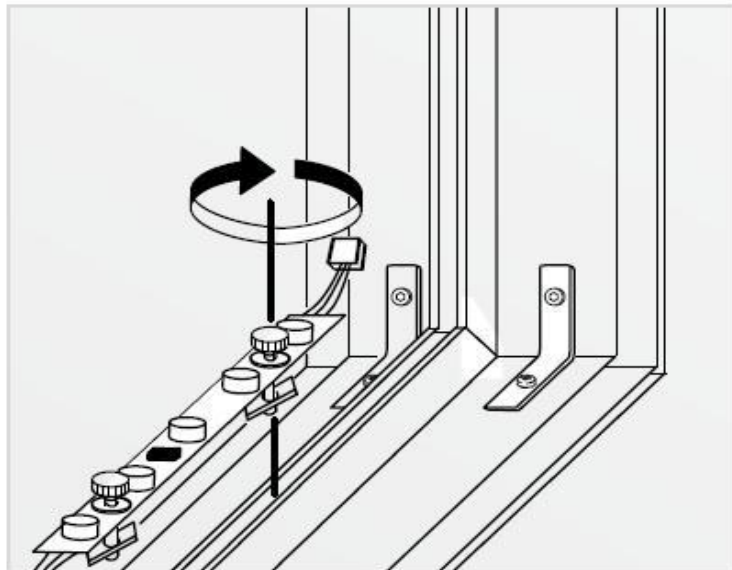
Step 5



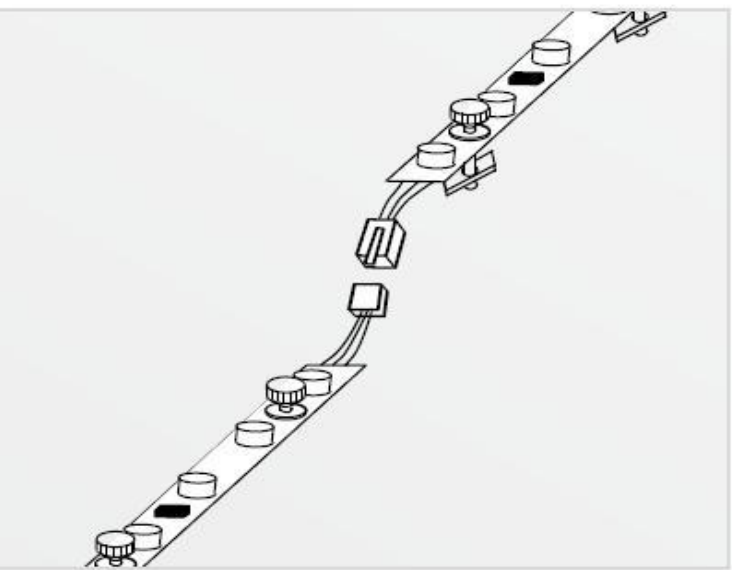
>> Easy Set Up (LED Modules)



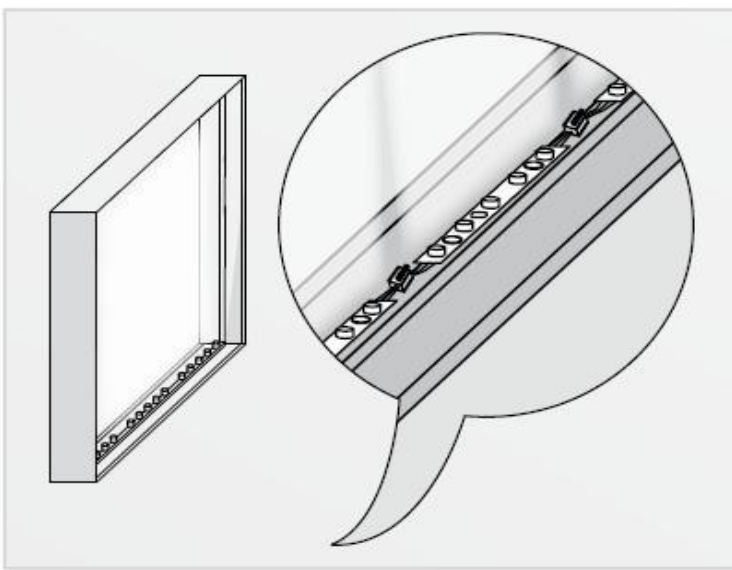
LED-High-Power-Module



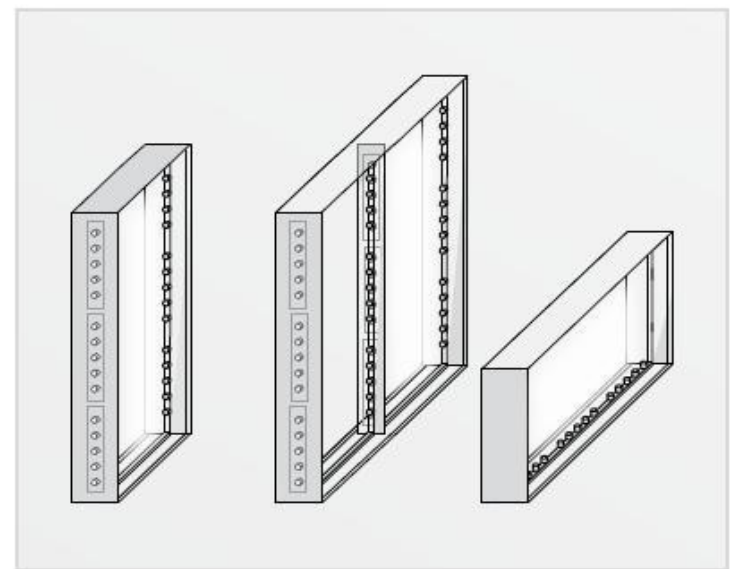
In-frame mounting



Connected modules by plug-in system



Mounted modules



Modules installed from the sides





Free Standing Display

(Single or double sided)

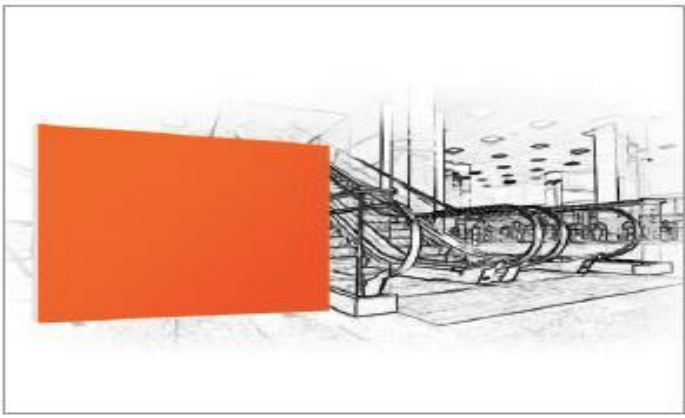
Single-sided textile displays. Very popular among retailers and exhibition stand builders. The groove on the side of the Single-sided “T-Lock” frame (STL) the T-Lock offers the option of placing accessories, such as brochure holders and LCD screens.

We have also developed “Kite feet” for our T-Lock frame. With only two feet it is possible to make a free-standing display of 600x300 cm (W x H)!

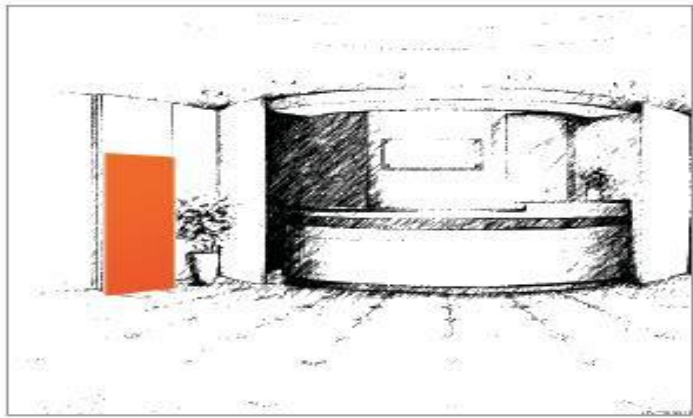
Accessories



>> Free Standing Display (Single or Double Sided)



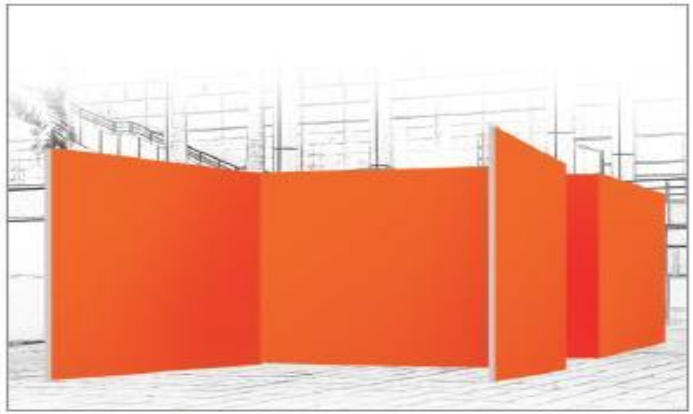
Example of use
Info wall



Example of use
Guide post



Example of use
Partition wall



Example of use
Exhibition stand



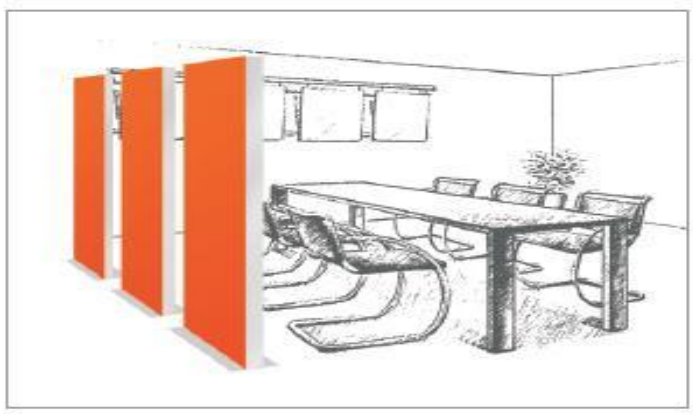
Example of use
Advertising



Example of use
Info point



Example of use
Guide post



Example of use
Partition wall

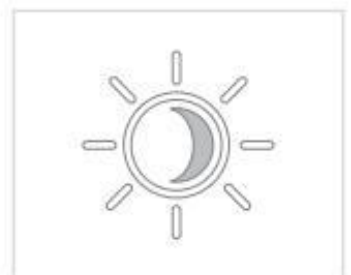
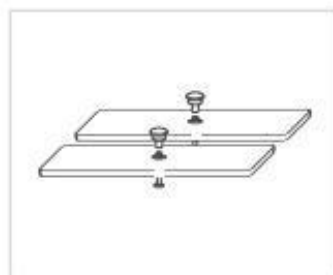
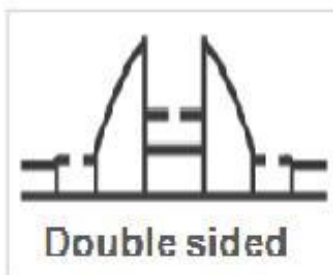


Free Standing Light Box (Single or double sided)

Our freestanding light boxes are usually applied in commercial surroundings to attract the attention of passers-by. Our frames are used in shopping malls, entertainment and sport centers, and airports.

Our light boxes are supplied single or double sided.

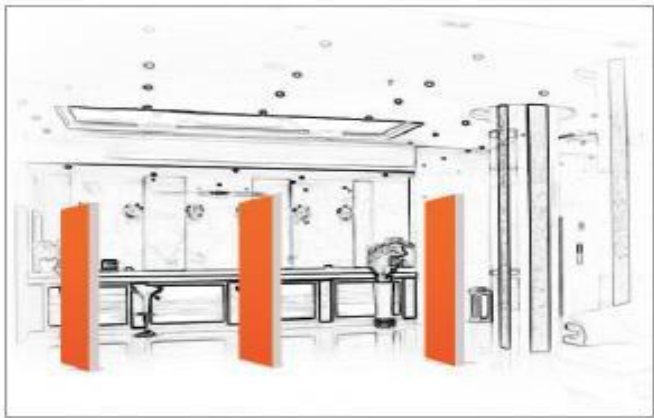
Accessories



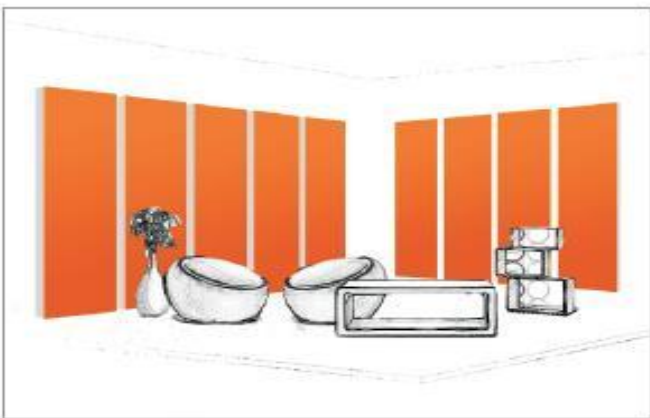
>> Free Standing Light Box (Single or Double Sided)



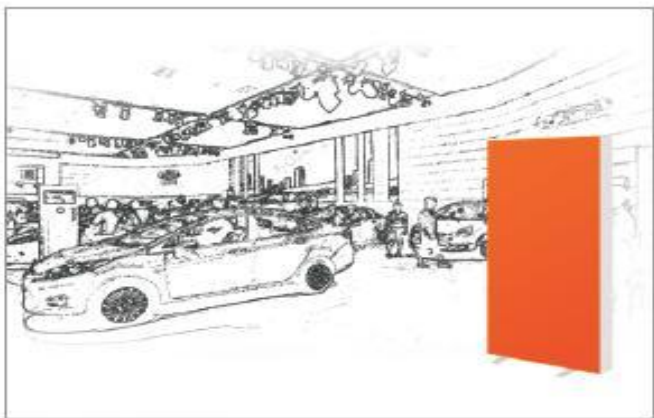
Example of use
Guide post



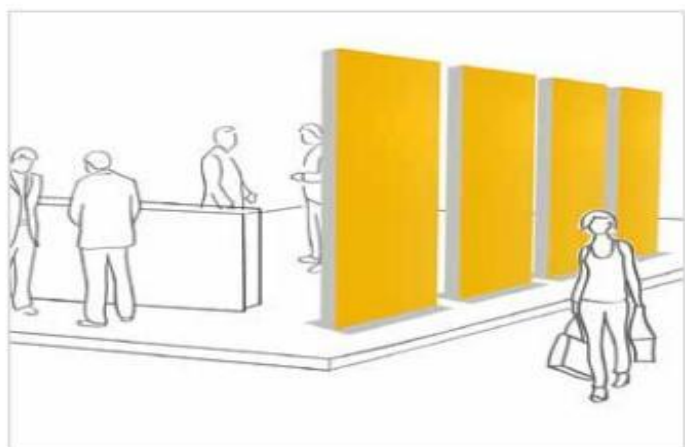
Example of use
Privacy screen



Example of use
partition wall



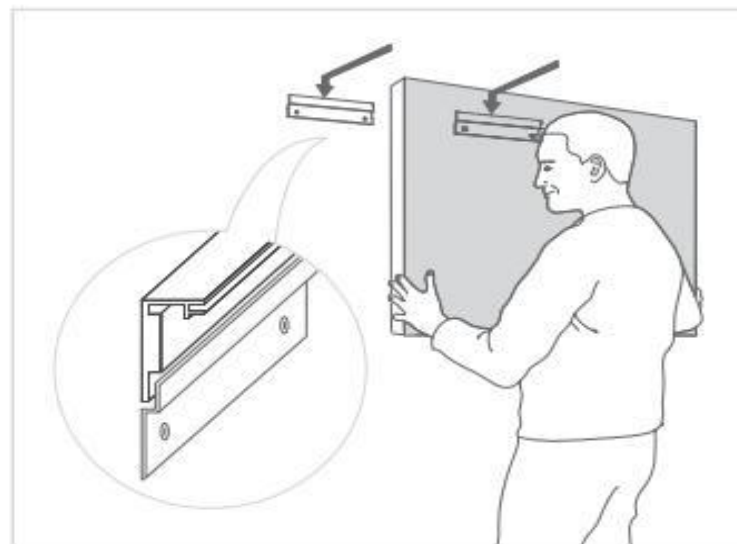
Example of use
Advertising





Wall Display (without lighting)

It is stylish and flexible frame for interior decoration in office, home and retail environment.



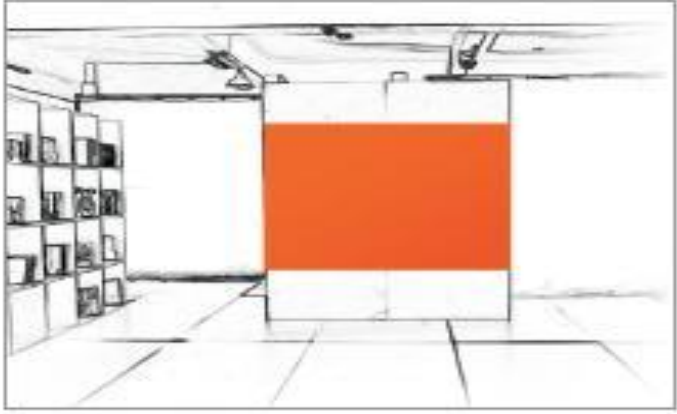
>> Wall Display (without lighting)



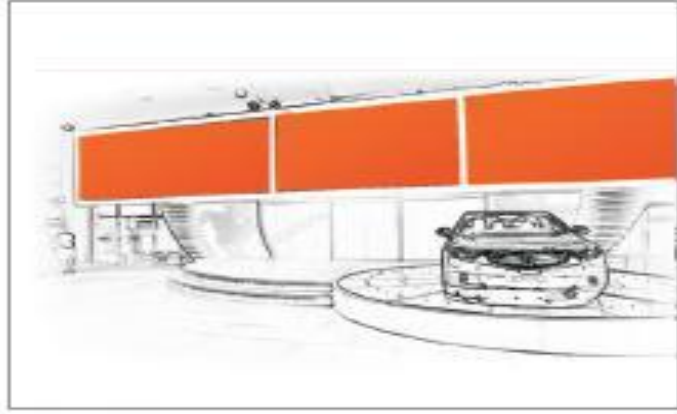
Example of use
Vertical



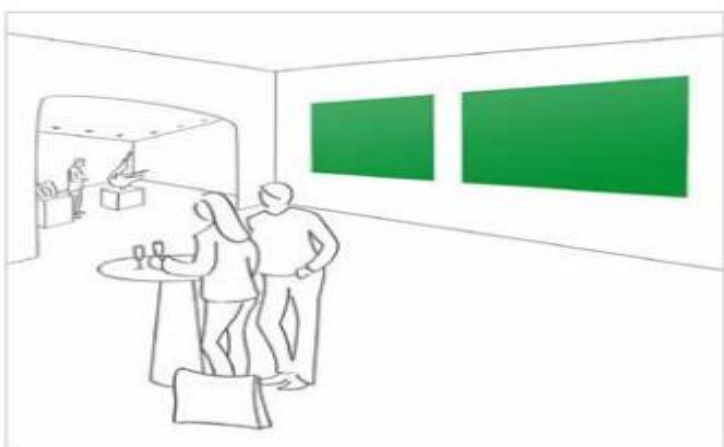
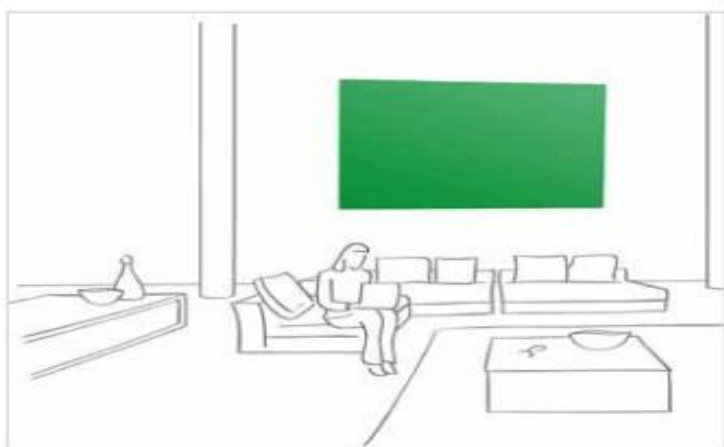
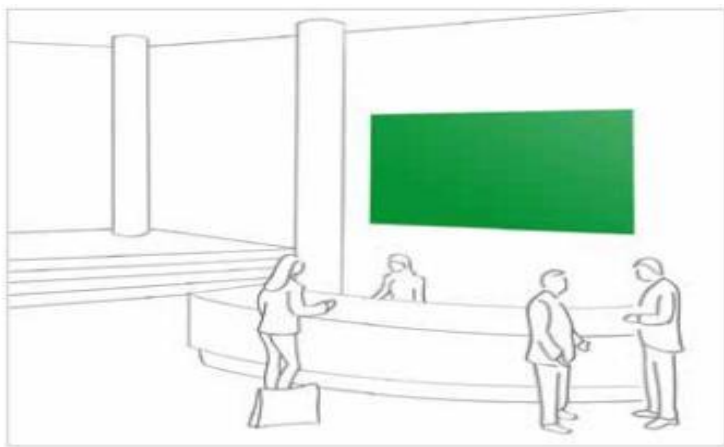
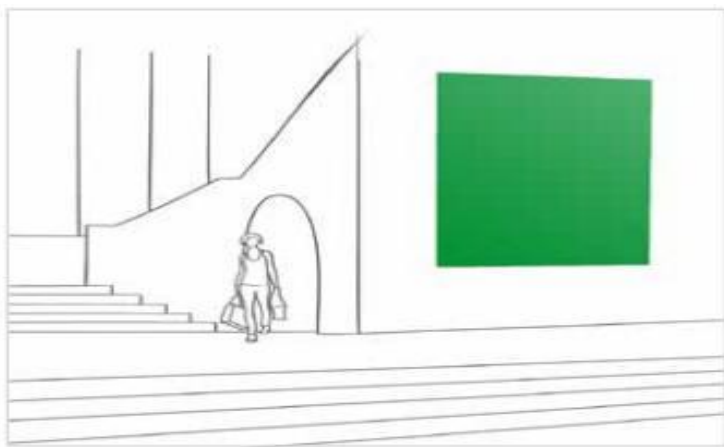
Example of use
Horizontal



Example of use
Advertising display



Example of use
Image display



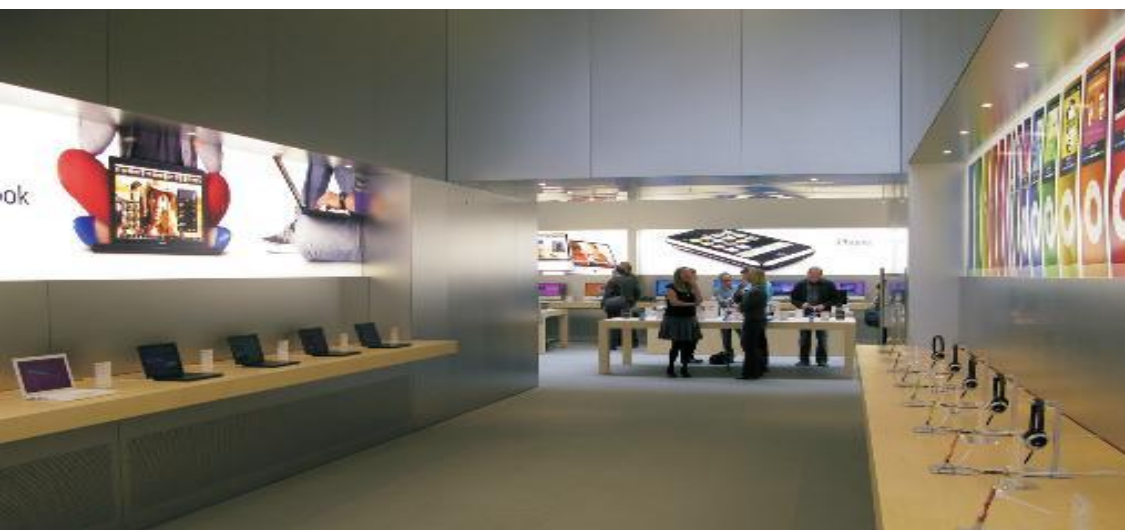
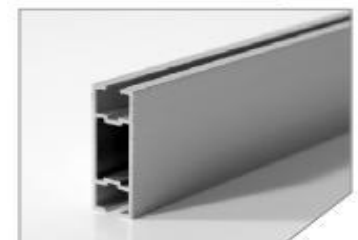
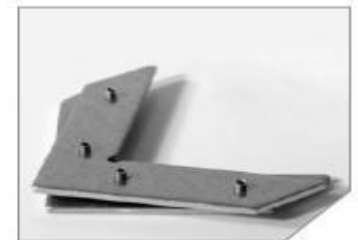
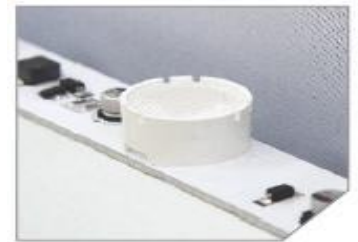


Wall Mounted Single Sided Light Box

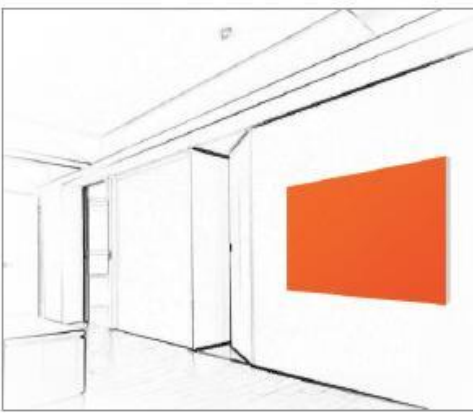
The light boxes are energy efficient, which makes this light box series environmentally friendly.

Our developers have succeeded in developing a high-power LED module enabling homogeneous lightning from the sides.

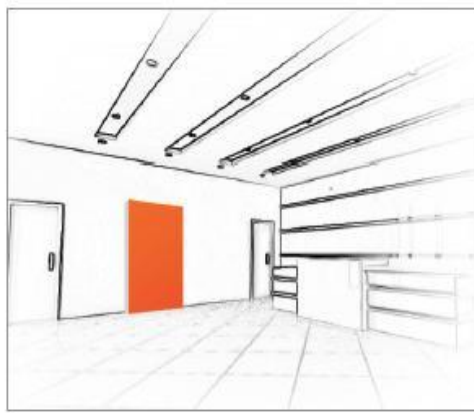
Accessories



>> Wall Mounted Single Sided Light Box



Example of use
Placed into wall



Example of use
Vertical



Example of use
Image display



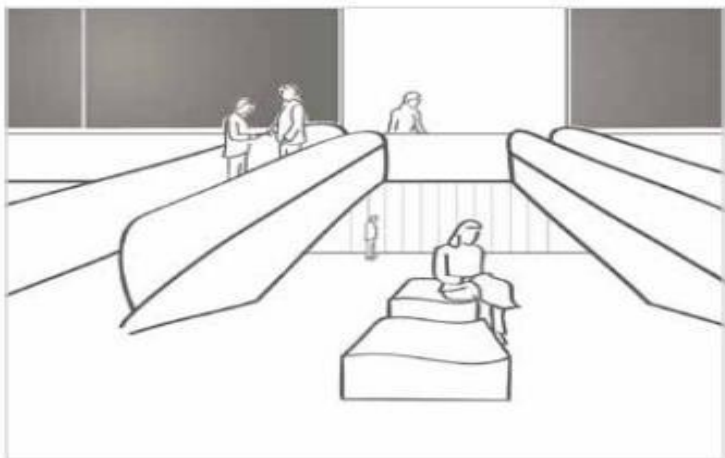
Example of use
In combination with shelf system



Example of use
As wall covering



Example of use
Advertising display





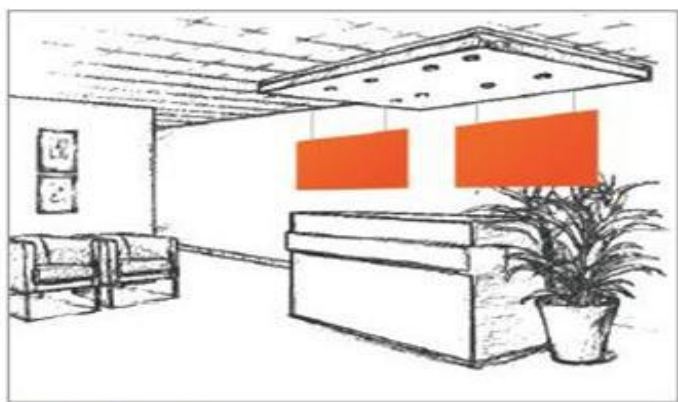
Suspended Display

The hanging displays are frequently used in shops, airports and museums. These displays are generally double-sided.

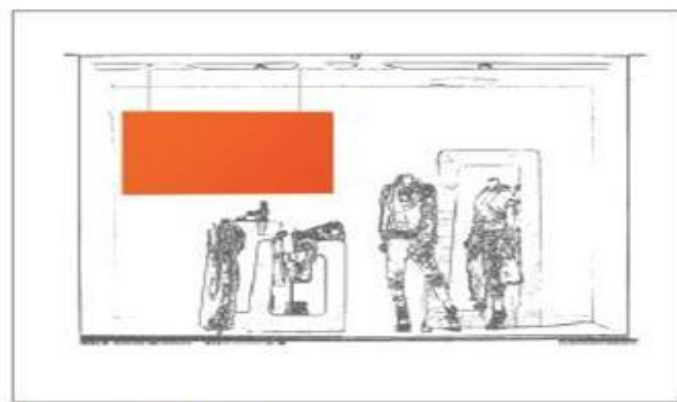
Accessories



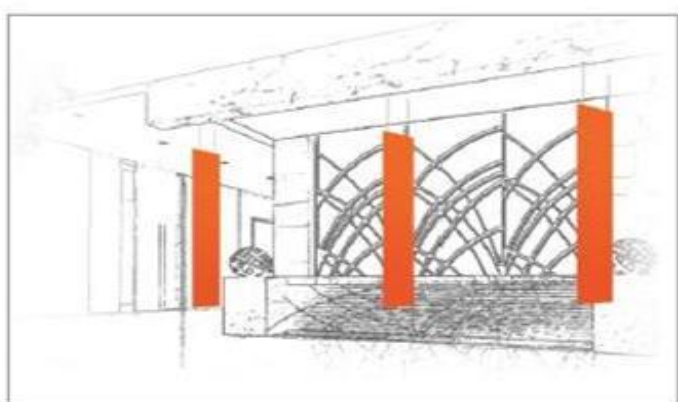
>> Suspended Display



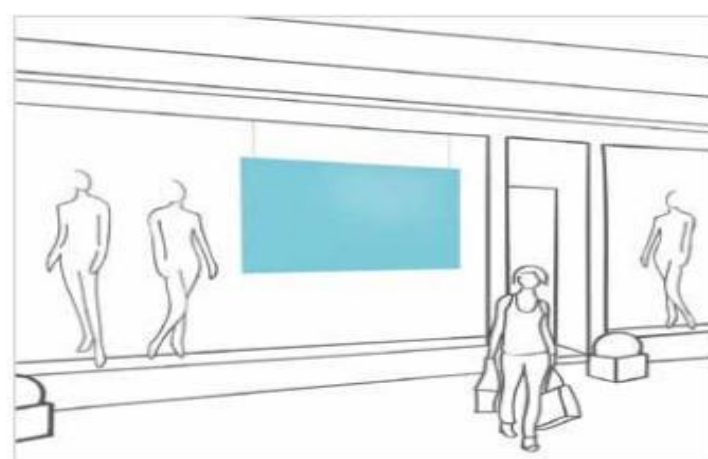
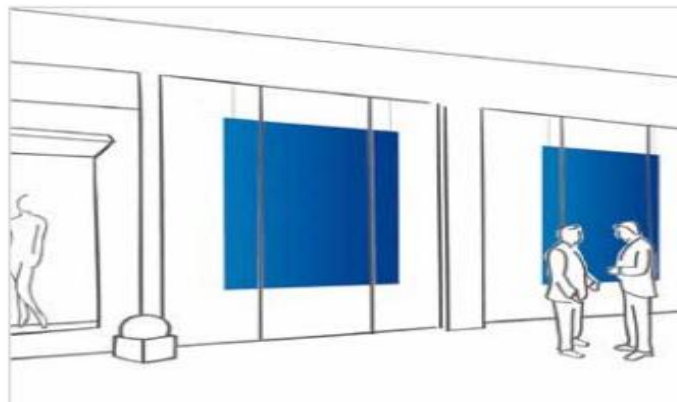
Example of use
Info display



Example of use
Shop window display



Example of use
Hotel lobby

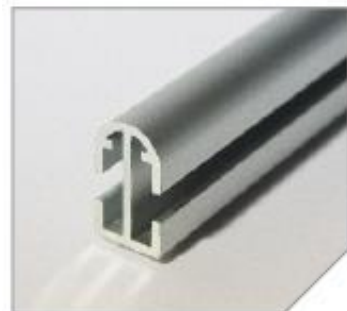




Ceiling Mounted Light Box

Our innovative LED lighting concept provides an equal light distribution and is very energy efficient. You can adjust the light intensity according to your needs and by choosing a print you can create any atmosphere you like.

Accessories



>> Ceiling Mounted Light Box



>> Ceiling Mounted Light Box



Example of use
Restaurant ceiling



Example of use
Mounted on ceiling (see accessories 1)



Example of use
Suspended from ceiling (see accessories 2)



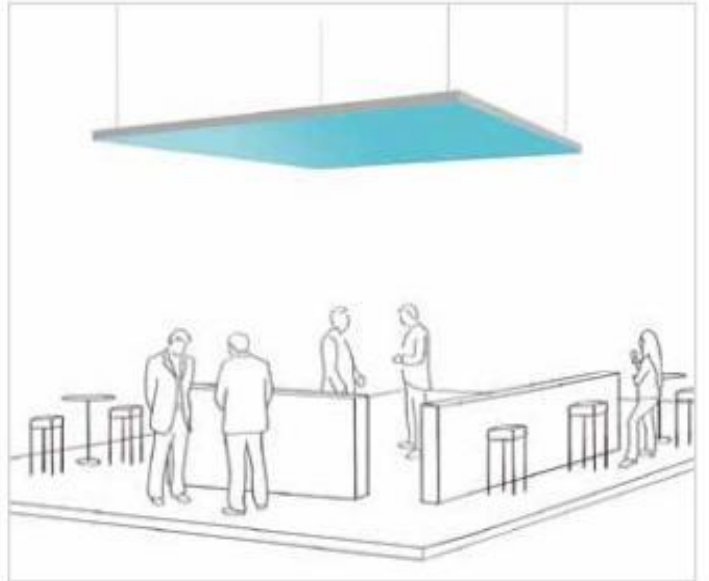
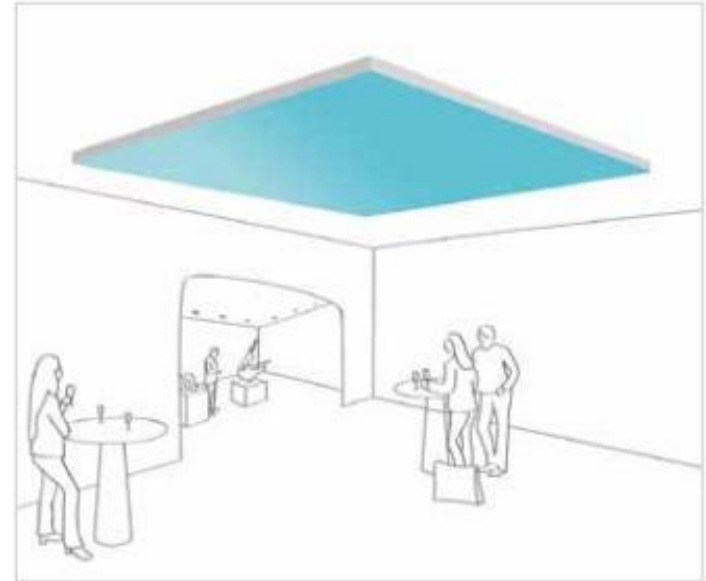
Example of use
Corridor ceiling



Example of use
Mounted in ceiling



Example of use
Show room ceiling





Display Info Wall

Double-sided or illuminated option

The modular display wall combined small display together to form a large display info wall. The textile prints can be changed according to your needs. Today as a display in your foyer, tomorrow as part of your exhibition booth.



Set 1



Set 2



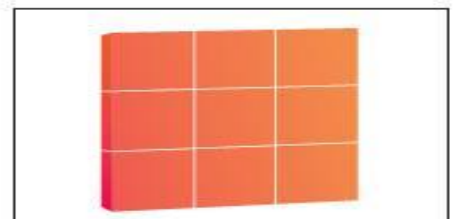
Set 3



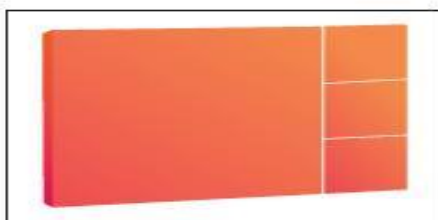
Set 4



Set 5



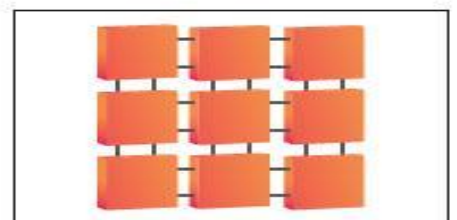
Set 6



Set 7



Set 8

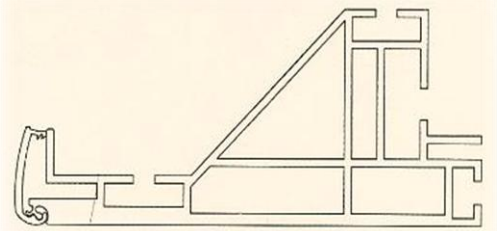


Assembling
Frames must be connected by coupling

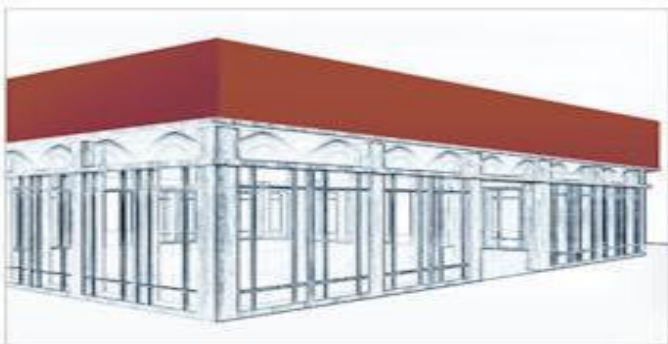


Outdoor Light Box

The outdoor light box use weather proof outdoor version of LED modules, cables and extensions. The graphics are printed onto high weather-resistant Outertex.

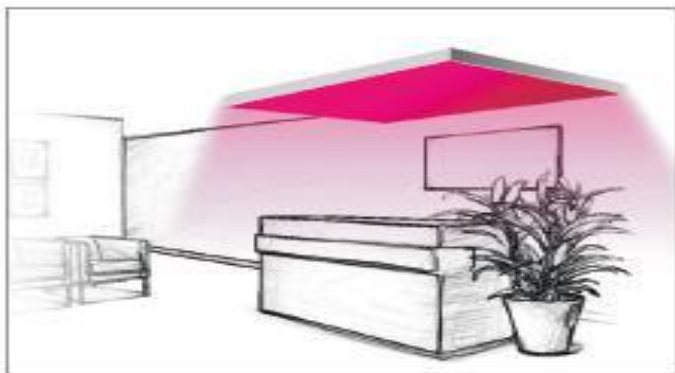


Outdoor light box profile

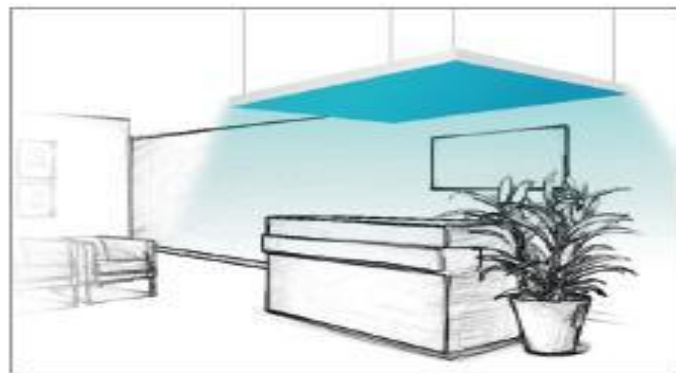




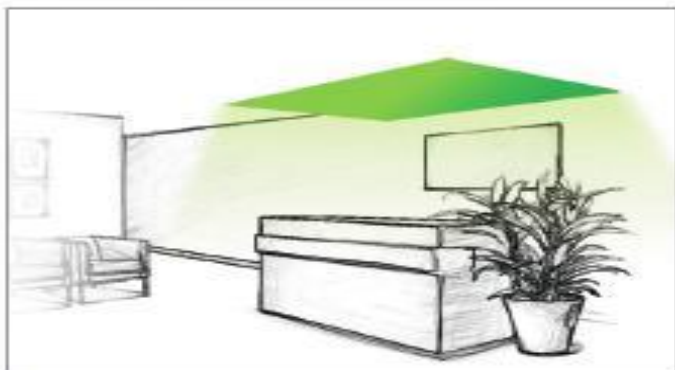
Adjustable RGB Illuminated Ceiling Display



Example of use
Mounted on ceiling (see accessories 1)



Example of use
Suspended from ceiling (see accessories 2)



Example of use
Mounted in ceiling

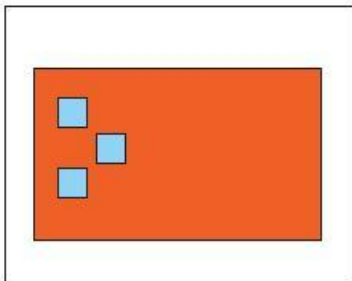


Optional accessories
Wireless LED controller

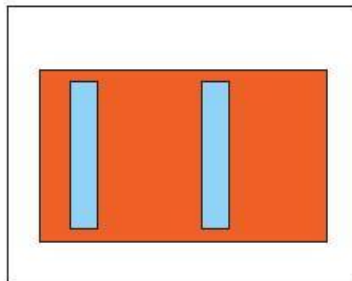


Magnetic Textile Display Stand

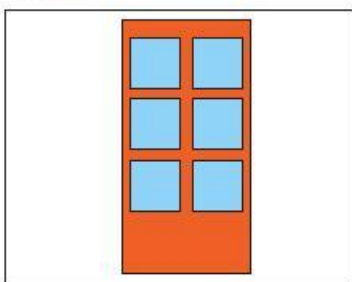
The magnetic textile display offers the option of placing accessories onto the display. The accessories are fitted with magnets and are easily placed and removed.



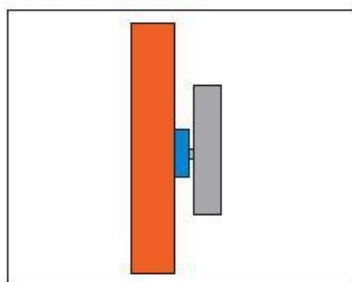
Example of use
Accessories



Example of use
Accessories



Example of use
Accessories



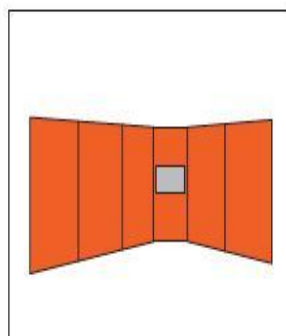
Example of use
Accessories



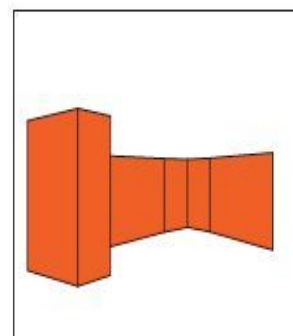


Exhibition Stand

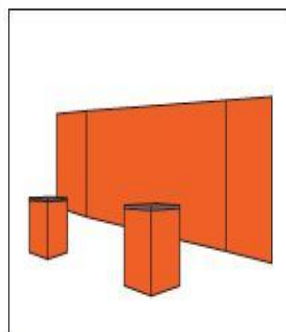
Our products can be used to build stands of any shape and form, the textile prints can be easily changed, which makes it possible to give your stand a complete new look and feel at the next event.



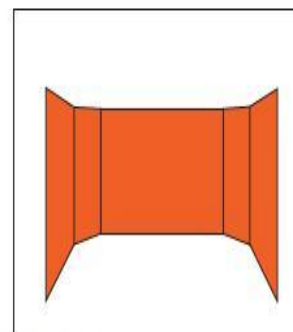
Example of use
Coupled frames with an LCD construction in the corner



Example of use
Coupled frames with a pantry

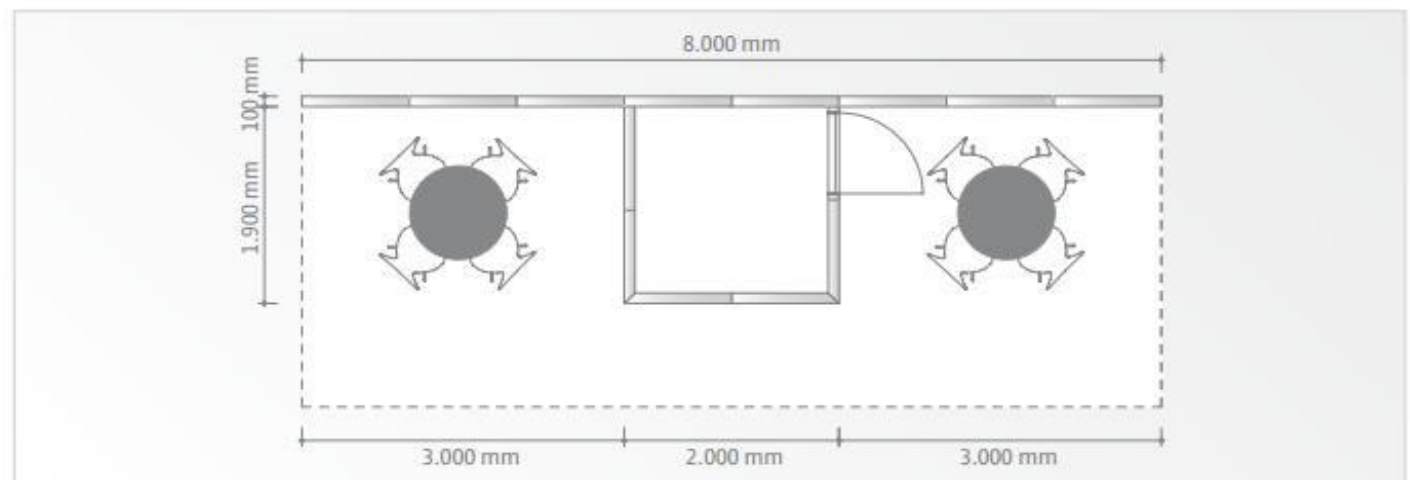
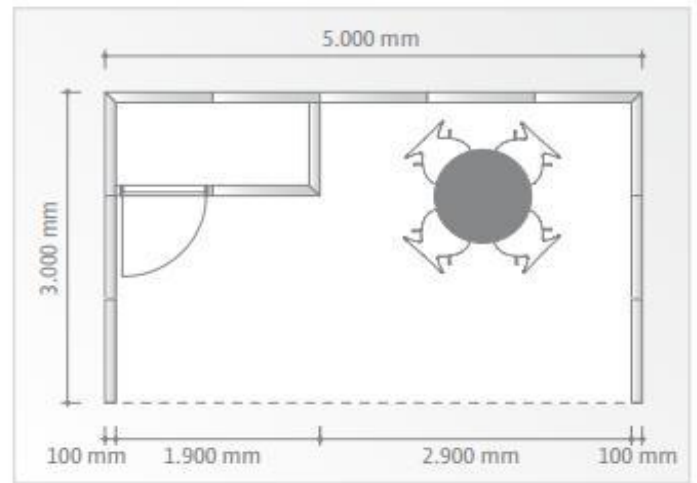
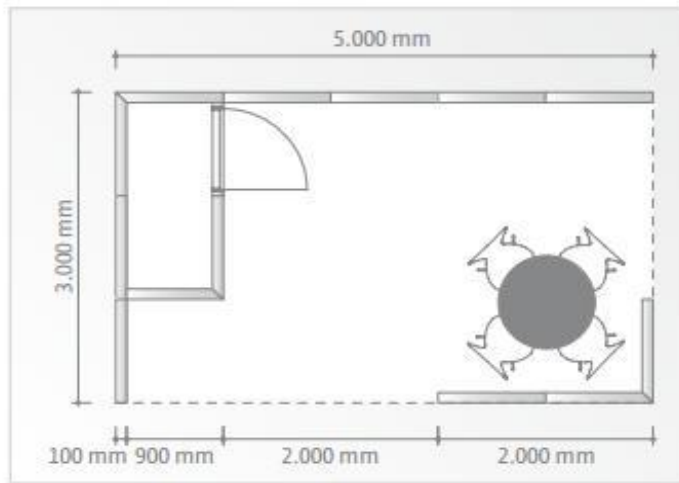
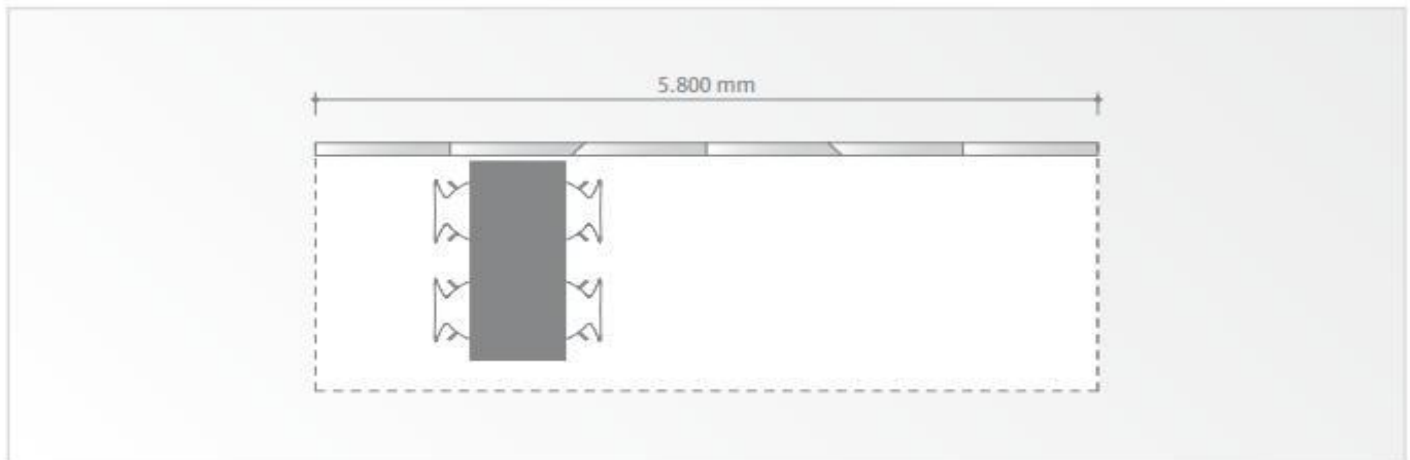
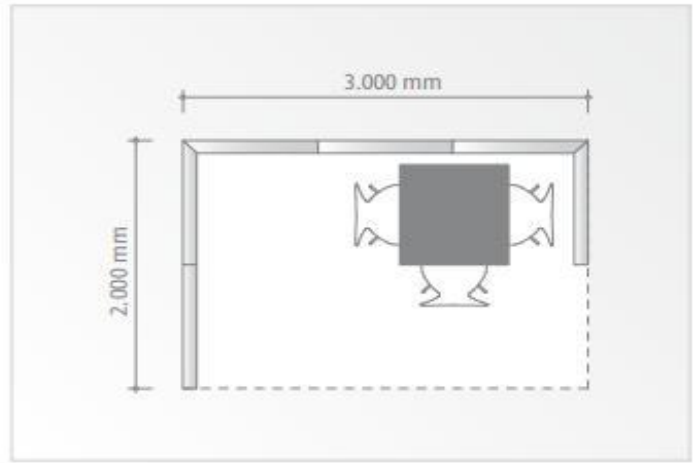
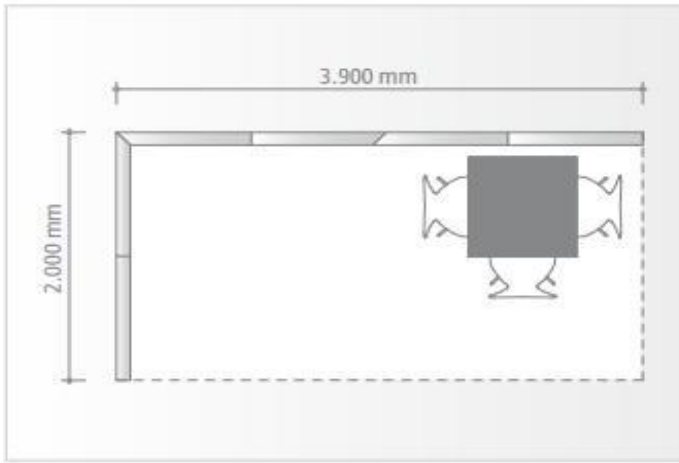


Example of use
Coupled frames in a straight set-up with two presentation columns

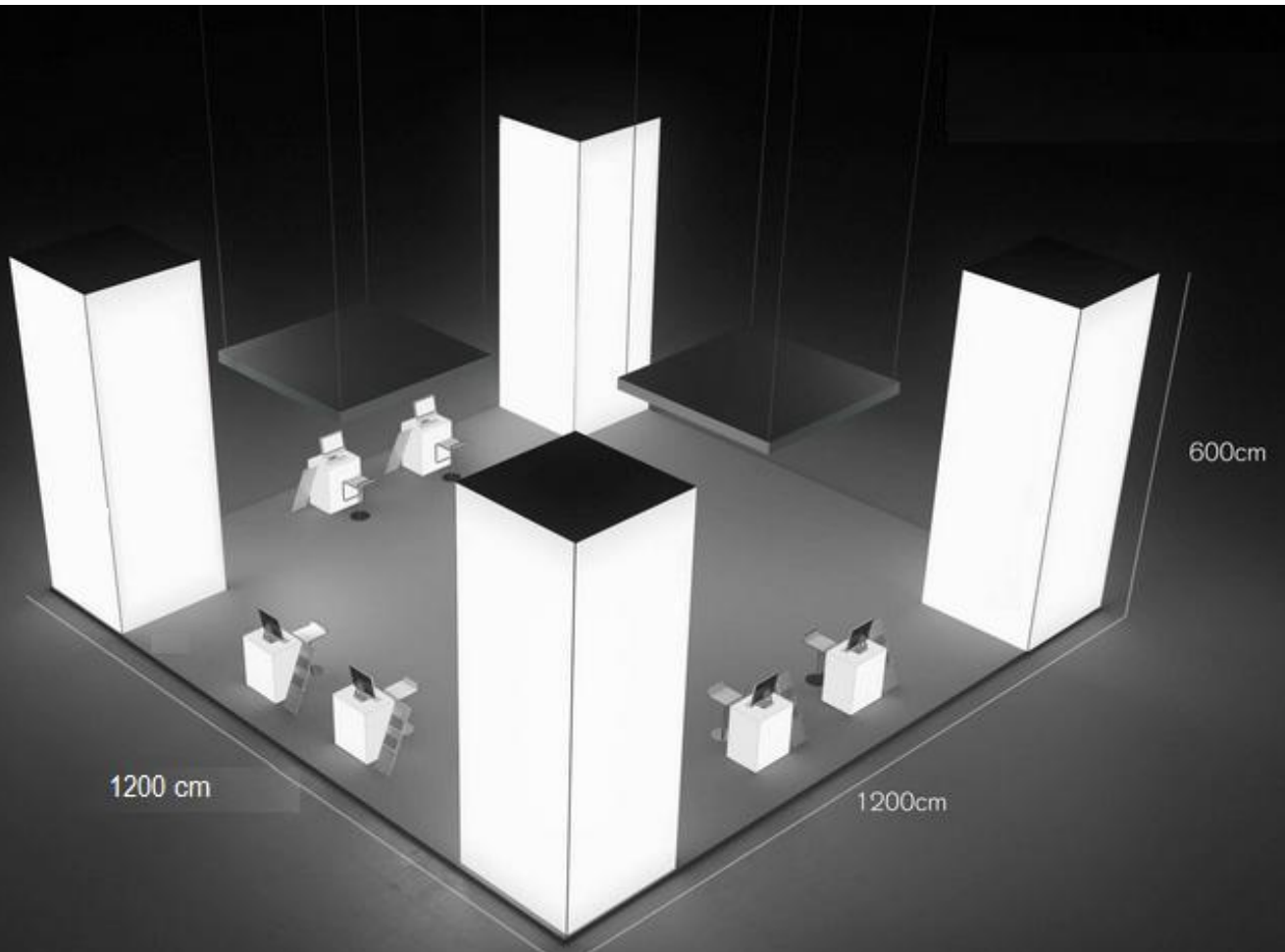
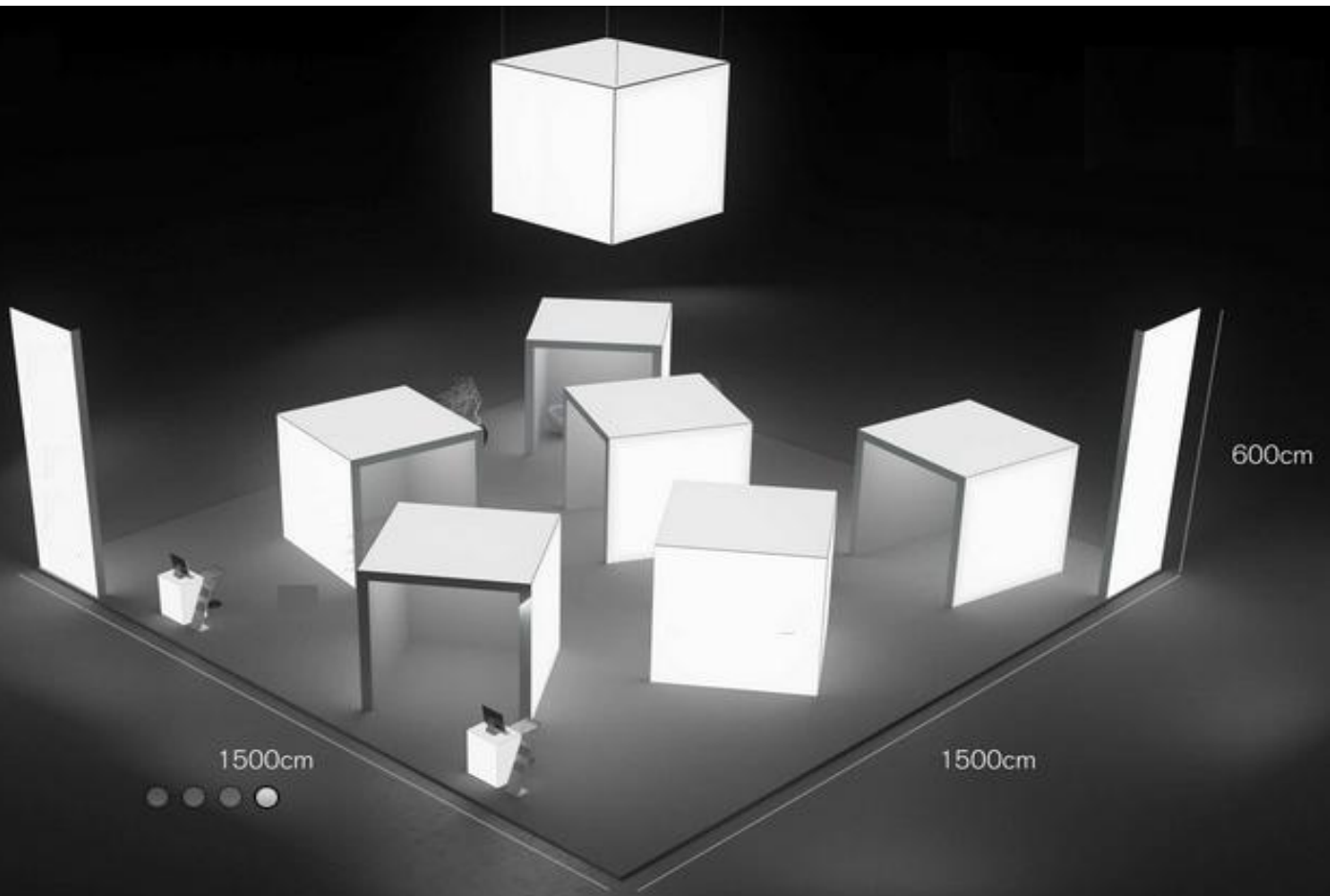


Example of use
Coupled frames in a "U" set-up

>> Exhibition Stand



>> Exhibition Stand



>> Exhibition Stand





Curved Display

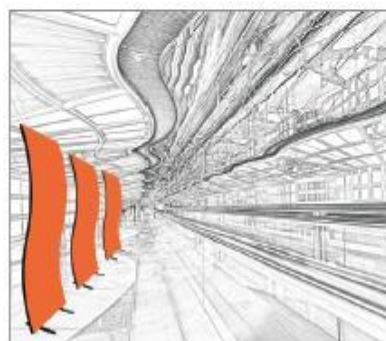
Developed of CNC tooling center, we can bend various profiles into the desired radius . This could have consequences for the standard connectors. Obviously our team is always ready to provide you with a custom-made solution and can adjust standard connectors or make entirely new one.



Example of use
Office ceiling



Example of use
Exhibition

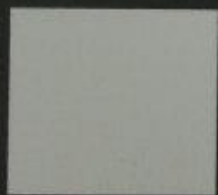


Example of use
Display

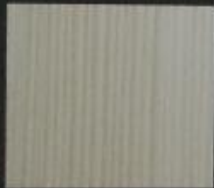


Example of use
Display

>> Timber Frame



Satin White



Fino Creme



Oakwood



Sandwood



Lime



Tabacco Wood

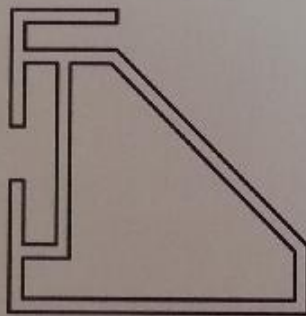
Bitter Black

Frames

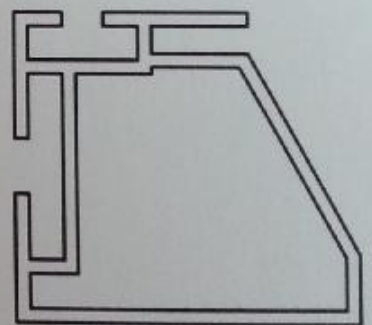
TTF. 01. 01. 00



TTF. 01. 01. 01



TTF. 01. 01. 02



>> Special Frame Design



>> Available Accessories



Usage in textileframe



"Plug & Play" overview



Extension cord 2700 MM



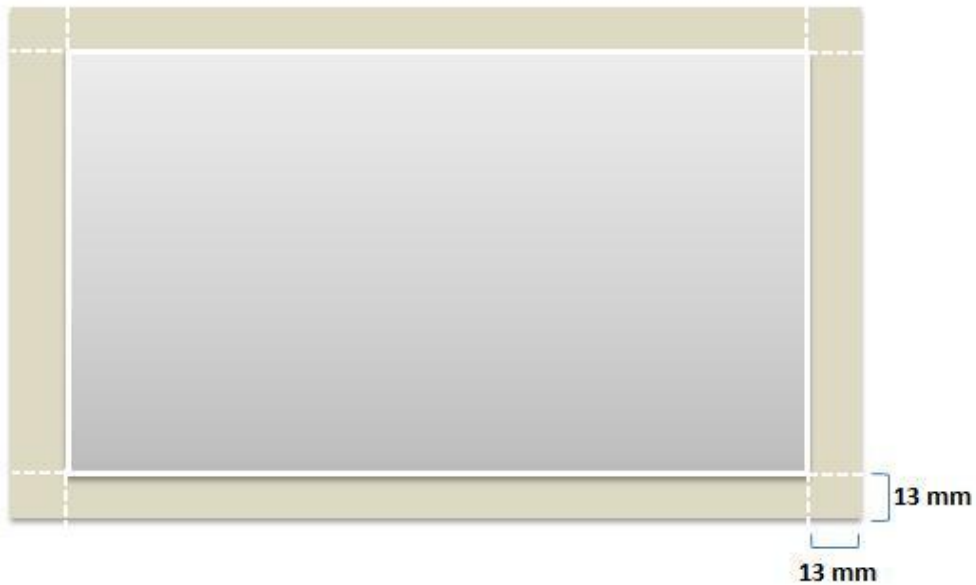
Extension cord 150 MM

>> Package



>> Print Data Specification

Bleed • 13mm bleed edge on all sides (no crop marks)



Resolution • resolution for final output at least 100 dpi

Format • ratio 1:1

Color • CMYK color space

Find Us At:

HK Head Office:

conceptGLO Company

t / +852 3114 0447

f / +852 3114 0464

m / +852 9758 6097

e / pam@conceptGLO.com

w / www.conceptGLO.com

